



15th Ave S Improvements Project Public Meeting

Our vision, mission, and core values

Vision: Seattle is a thriving equitable community powered by dependable transportation

Mission: to deliver a transportation system that provides safe and affordable access to places and opportunities

Committed to **6 core values:**

- Equity
- Safety
- Mobility
- Sustainability
- Livability
- Excellence

Presentation overview

- Project purpose
- Project elements and benefits
- Construction
- 15th Ave S and S Columbian Way
- Q&A

Project purpose

Each year, we pave arterial streets in poor condition to make them safer and smoother and to extend their useful life.

In 2020, we'll repave:

- About 1 mile of 15th Ave S between S Spokane St and S Angeline St
- A section of S Spokane St between S Columbian Way and 18th Ave S

We'll also make changes to the intersection of 15th Ave S and S Columbian Way.



Project elements and benefits

Paving and improvements:

- New pavement
- Drainage improvements
- Upgraded pedestrian push buttons
- New ADA-compliant curb ramps
- Improved and updated sidewalks, where needed
- Leading pedestrian intervals at crossing
- Pedestrian improvement at 15th Ave S and S Spokane St

Construction

What to expect during construction:

- Noise, dust, vibration, and large equipment
- Traffic lanes and sidewalks reduced or detoured
- Driveways may be temporarily blocked but business access will be maintained
- Temporary intersection closures

Ways we minimize impacts:

- Project hotline and email
- Advance notice through email updates and other promotions
- Ensuring clear and effective detour and closure signage
- Up-to-date website

Construction schedule

EARLY 2020

Finish design

EARLY TO MID-2020

Pre-construction coordination
with the community

FALL 2020

Begin construction

2021

Complete construction

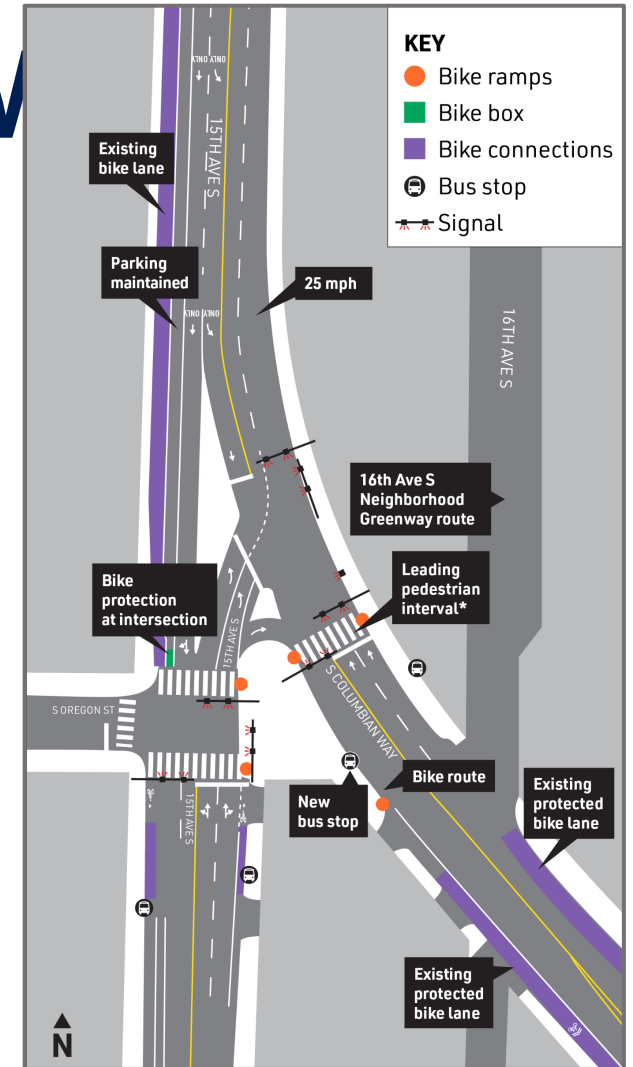
15th Ave S and S Columbian Way

Over the last two years, we've engaged with neighbors and businesses to develop an intersection design that fits the needs of everyone.

Based on feedback we heard, we developed a new proposed concept for the 15th Ave S and S Columbian Way intersection.

What we heard:

- Keep pedestrians safe
- Retain the traffic signal at the intersection of 15th Ave S and S Oregon St
- Use space for traffic improvement, not landscaping
- Business parking along 15th Ave S should be maintained
- Maintain traffic operations
- Provide safety and accessibility benefits for people walking, biking, driving, and rolling



*Leading pedestrian interval gives pedestrians more time to cross before vehicle traffic signals change

15th Ave S and S Columbian Way

Elements:

- Crossing and signal consolidation, plus revised peninsula design, make travel safer for people walking
- Allowing a left turn from S Oregon St to 15th Ave S offers better navigation for people driving
- New bus stop increases convenient access for students, residents, and customers of local businesses
- Protected bike lanes make riding safer for people biking, and connection to greenway makes travel easier
- New curb bulbs improve accessibility for people with mobility challenges

Q&A

15thAveAAC@seattle.gov | (206) 775-8719
www.seattle.gov/transportation/15th-Ave-S-AAC

www.seattle.gov/transportation

